

[CORE] Facilities [FC]

Sub Criteria 4.1

FC 10: Facilities for Differently-abled

Ramps with Railings

To facilitate barrier-free movement, SRHU buildings such as the Medical Block, Adi Kailash auditorium, and other blocks are equipped with ramps with railings. These features ensure that students with physical disabilities can access classrooms, laboratories, and other academic facilities without obstruction. SRHU provides wheelchairs in critical areas including Himalayan Institute of Medical Sciences (HIMS) and other buildings. To further aid mobility, an electric vehicle (E-vehicle) service is available for transporting physically challenged individuals across campus. Additionally, an over bridge ensures safe and accessible connectivity between buildings, eliminating the need to cross busy roads.



Ramp in Administrative Block, SRHU



Ramp in School of Science & Technology, SRHU



Ramp in Entrance of Himalayan Institute of Medical Sciences, SRHU



Ramp Facility at Central Library



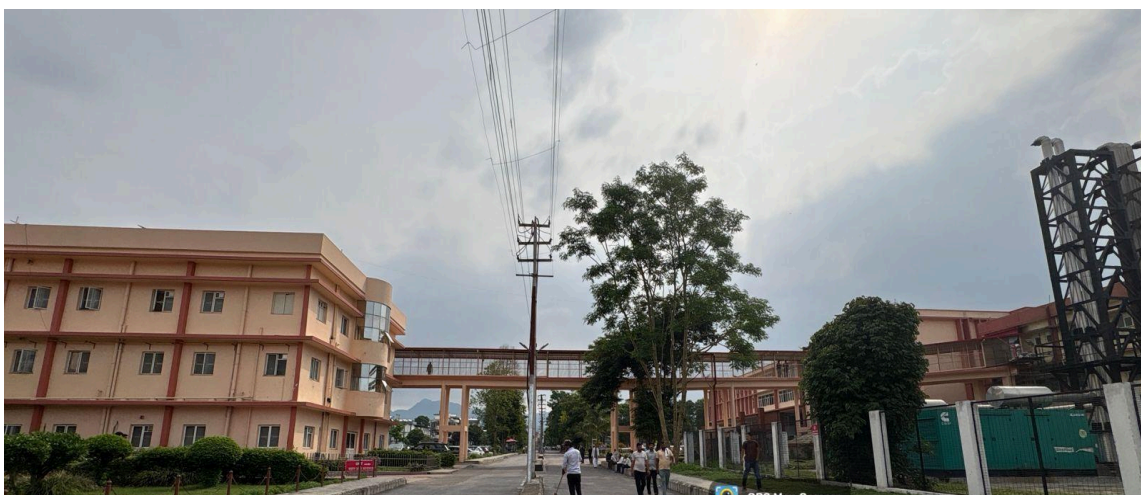
Wheel Chair Facility



Student Using Wheel Chair With Assistance



E Vehicle for the Transportation





स्वामी राम हिमालयन विश्वविद्यालय
Swami Rama Himalayan University

Overbridged Facility for Transportation